

Welcome

Thank you for taking the time to visit our public exhibition today.

We want to hear your thoughts on our early plans for Thurrock Data Centre, a proposed new data centre located on land south of the A13 at Lakeside Basin off Arterial Road.

This exhibition includes information about our early plans and proposals for the Thurrock Data Centre - including the planning process, how we'll assess environmental impact and the different ways you can get involved and share your feedback.





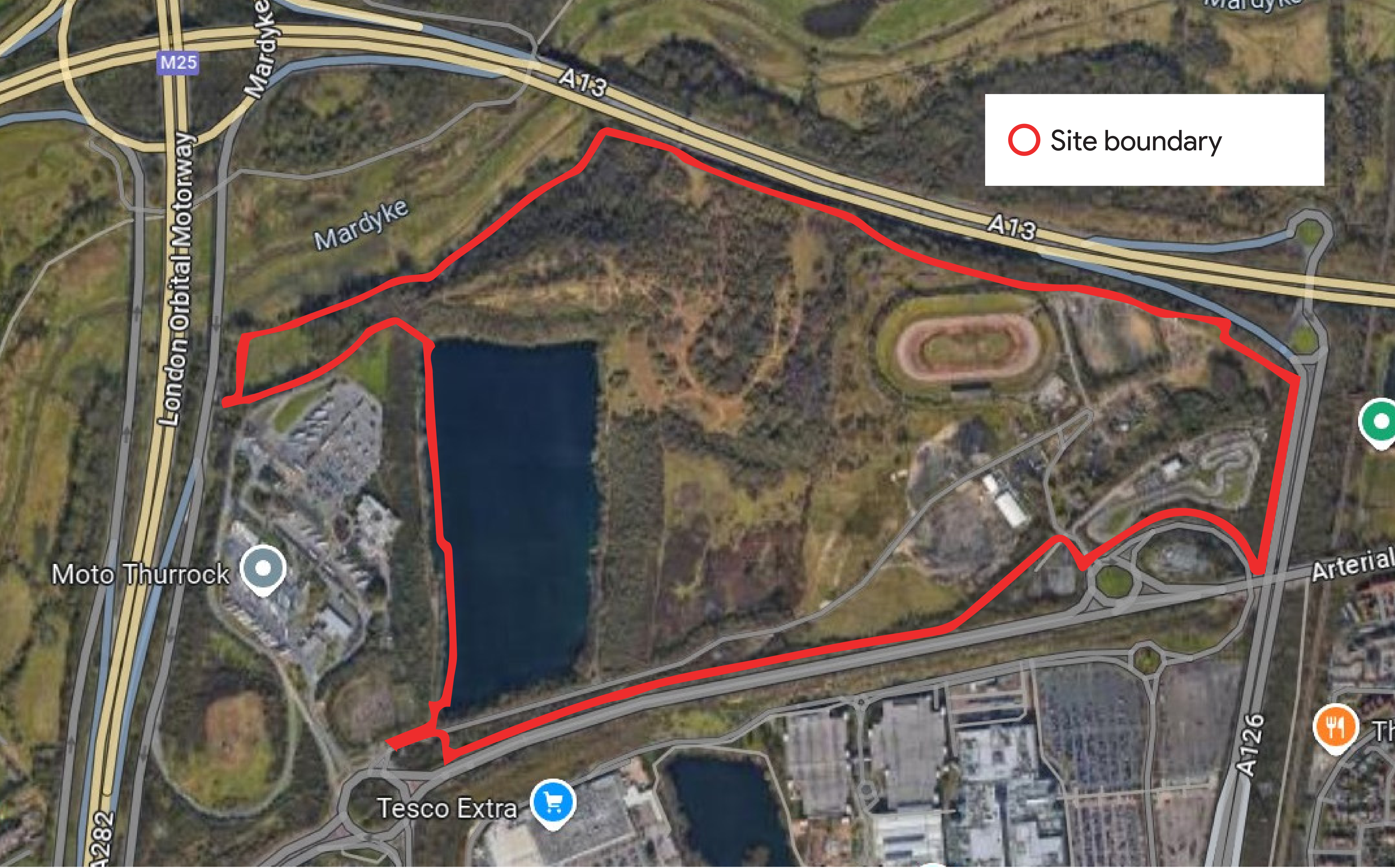
What is a data centre?

Data centres are the global hubs of the internet's connectivity, digital activity, and secure storage. They are where the internet lives.

Data centres are facilities with lots of computers that store and process large amounts of information. These data centres also play a key role in serving everyday needs, like running Google searches and streaming YouTube videos.

Data centres also enable businesses, hospitals, government bodies and other organisations to run their activities by hosting their digital information securely.

Google distributes all the data under its care – including its own – across many computers in different locations. This helps Google keep data safe, and makes it possible to deliver information to users in a fraction of a second, using fibre and internet connections.



Why here?

This site is ideal for a data centre campus. It is of the right size and character, having been previously used for mineral extraction, landfill, and development, and is suitably located to key power infrastructure necessary for the operation of a data centre.

Thurrock Council is currently progressing its emerging Local Plan, which will guide development across the authority until 2040. The site is included in the emerging Local Plan for Tier 1 employment use.

The red line boundary of the site extends to a total of 129 acres. We anticipate that the Thurrock Data Centre would occupy up to 70 acres of the site and would include up to four data centre buildings, an office building and supporting infrastructure.

Thurrock
Data
Centre

Our early proposals

Our proposals for Thurrock Data Centre are currently at an early stage. Feedback from the community, along with ongoing environmental assessments and technical work, will help us to refine our plans.

At this stage, we expect Thurrock Data Centre to comprise the following main elements:

- A data centre campus with a total floor area of up to 130,500 sqm Gross External Area (GEA), comprising up to four buildings, along with the construction of an office building of up to 4,100 sqm GEA. The height of each building would vary, with some parts up to 33m in height.
- Supporting infrastructure such as backup generators, energy storage and an on-site substation to ensure reliability of power.
- A new secure entrance, internal access roads and perimeter fencing, car parking and access into the site proposed via Arterial Road West.
- An off-site connection into the existing electricity network using underground cabling. The development would also involve landscaping and biodiversity enhancements.

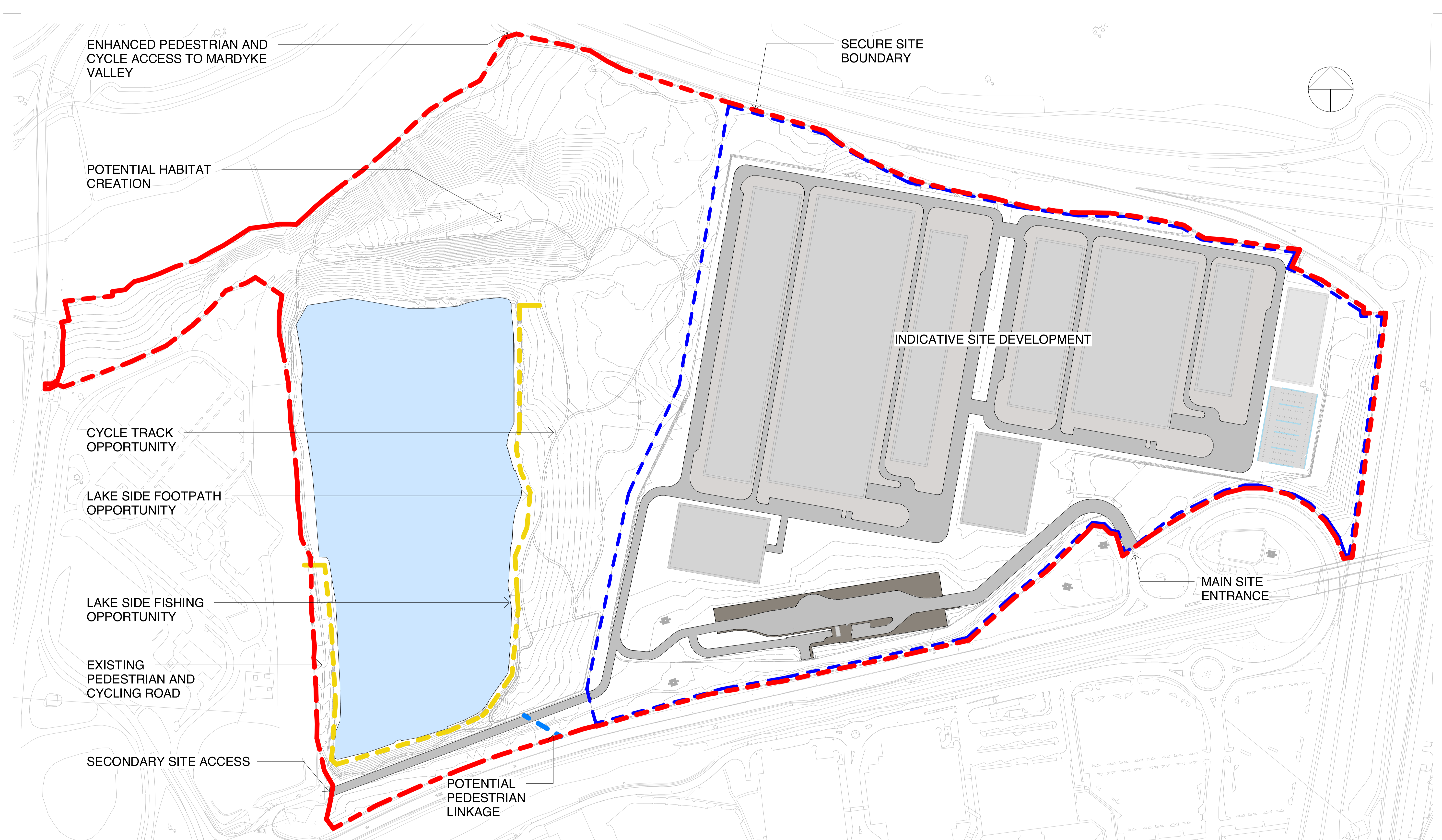


Site considerations

We are looking for opportunities to increase the permeability of the site, linking up nearby communities and creating recreational enhancements. With the wider site being surrounded on all sides by major roads, we are keen to provide a link between it and nearby communities.

This could mean opening up access to the local wildlife area at the site and developing footpaths and cycleways to support an open, green area of recreation for community use. Ideas we are considering include a mountain biking track, and pedestrian and cycle linkages to and from the Mardyke Local Wildlife Site to Lakeside.

We welcome your feedback on this as part of the consultation.



Thurrock
Data
Centre

The planning process

Our plans for Thurrock Data Centre are at an early stage of development. As we learn more about the site, through our environmental surveys and feedback from this consultation, we will be able to refine our proposals before we submit a planning application to Thurrock Council.

The application that we submit will either be 'outline' or 'hybrid.' The former means that things such as the final layout and design of each element (apart from access to the site) will be secured through subsequent 'reserved matters' applications that will be submitted to the Council for approval.

An outline application would include control documents, such as a Design Code and Parameter Plans, which will fix some things such as building separation distances, materials, height and the design along key boundaries, as well as providing a set of design principles for future design work.

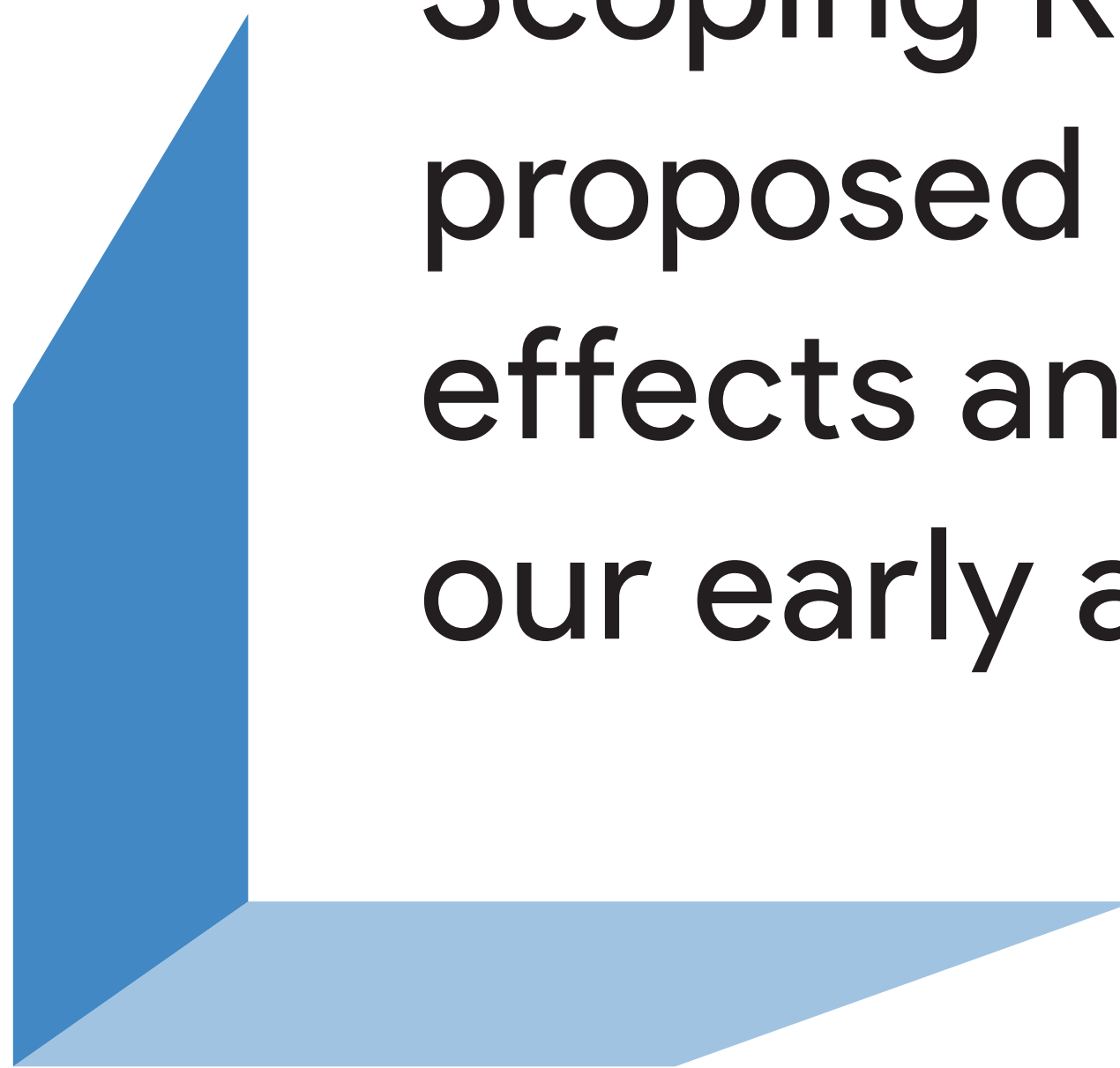
A hybrid application would include the same elements as an outline application but with demolition, remediation and earth/access works elements applying for full planning permission.



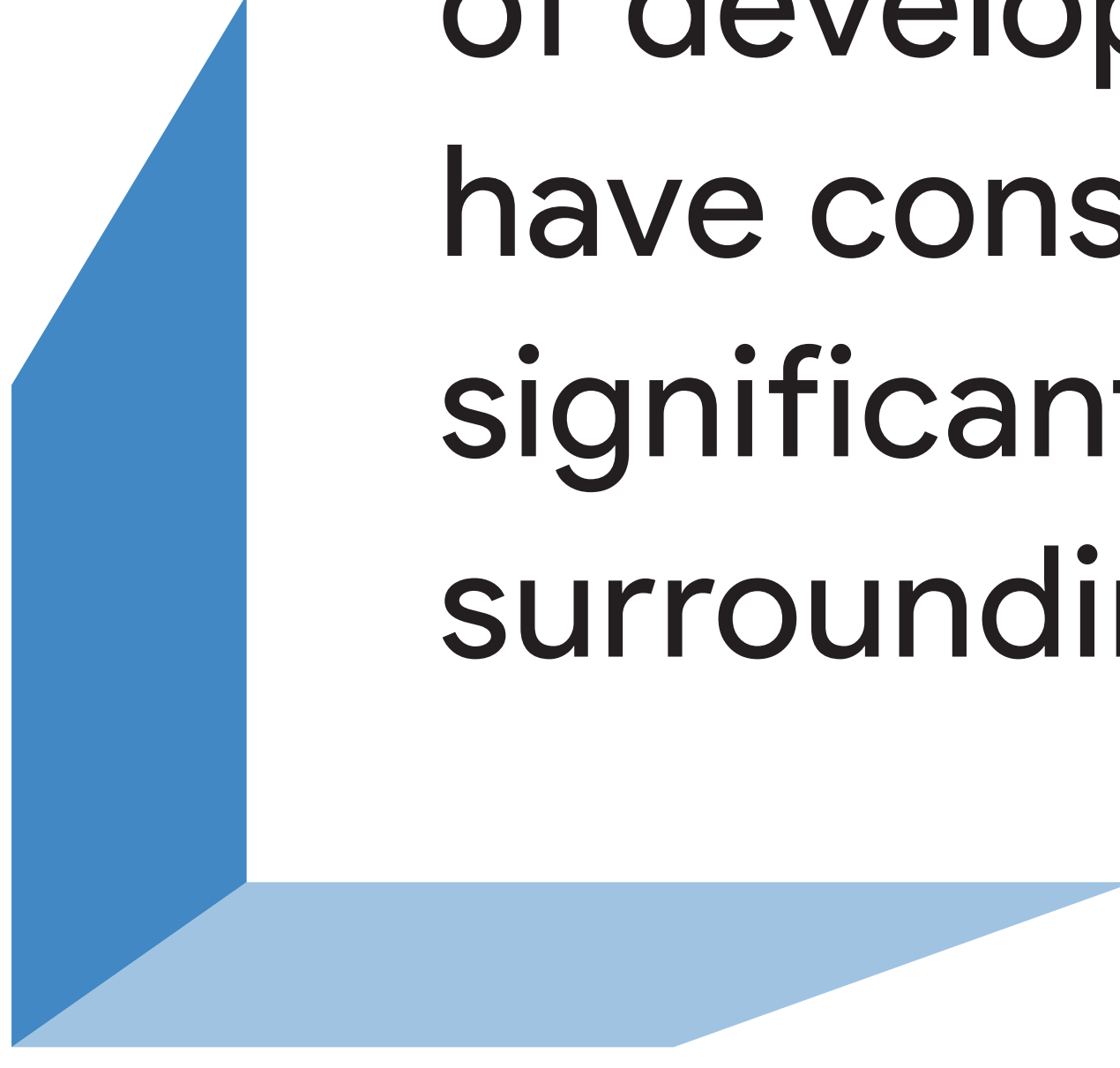
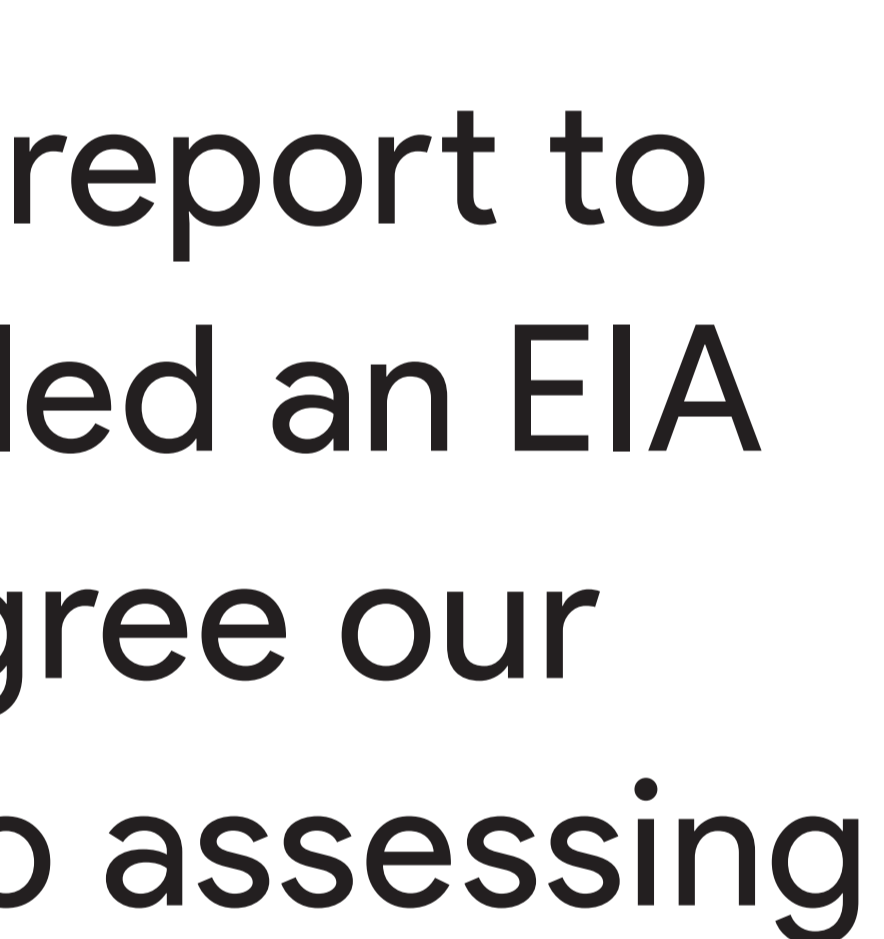
Assessing environmental effects

Understanding how our proposals could affect the surrounding environment is an important part of the development process. We will carry out an Environmental Impact Assessment (EIA) to assess the potential effects, both positive and negative, that Thurrock Data Centre could have on the environment over its lifetime.

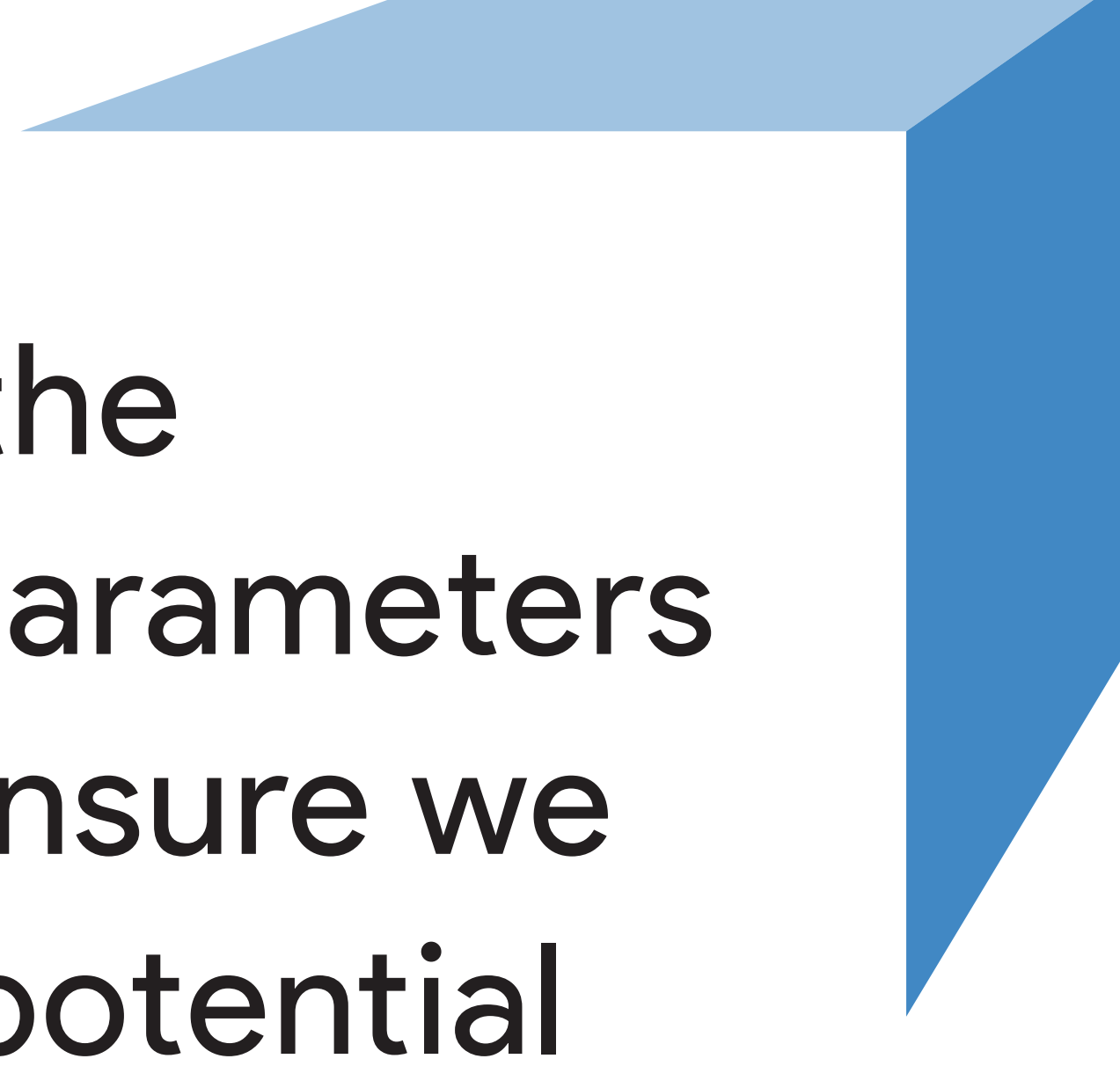
As the design of Thurrock Data Centre is not yet finalised, we will carry out these assessments based on 'parameters.' The parameters represent the maximum possible scale of development to ensure we take a conservative approach to identifying any potentially significant environmental effects. The outputs of these environmental assessments, along with feedback from this consultation and ongoing technical work, will help us to refine the planning application we submit to Thurrock Council.



We have submitted a report to Thurrock Council (called an EIA Scoping Report) to agree our proposed approach to assessing effects and share the outputs of our early assessment work.



This report looks at the maximum possible parameters of development to ensure we have considered all potential significant effects on the surrounding environment.





Working with communities

Wherever we operate, we invest in the communities around us.

Google builds long-lasting relationships with local organisations that align with local needs and priorities. Working with partners in the community like schools, non-profit organisations and small businesses, Google can help deliver a diverse range of jobs and skills training, as well as improved access to digital technology for communities.

We welcome suggestions as to how we can make a positive local contribution.

Thurrock
Data
Centre



Construction

If Thurrock Data Centre receives planning permission, we expect construction to be completed in phases. The exact timings and programme would depend on the final layout.

A Construction Logistics Plan and Construction Environmental Management Plan would be agreed upon before construction begins to ensure that impacts are minimised. Importantly, these documents will include measures to control traffic travelling to and from the site to limit impacts on the community. A separate Transport Assessment will further inform mitigation work, so we accurately understand how the project could affect local transport.

Operation

Once operational, data centres are quiet neighbours compared to other types of development of this use class. Thurrock Data Centre would be operated by a team of staff working in shifts to monitor and maintain the facility.

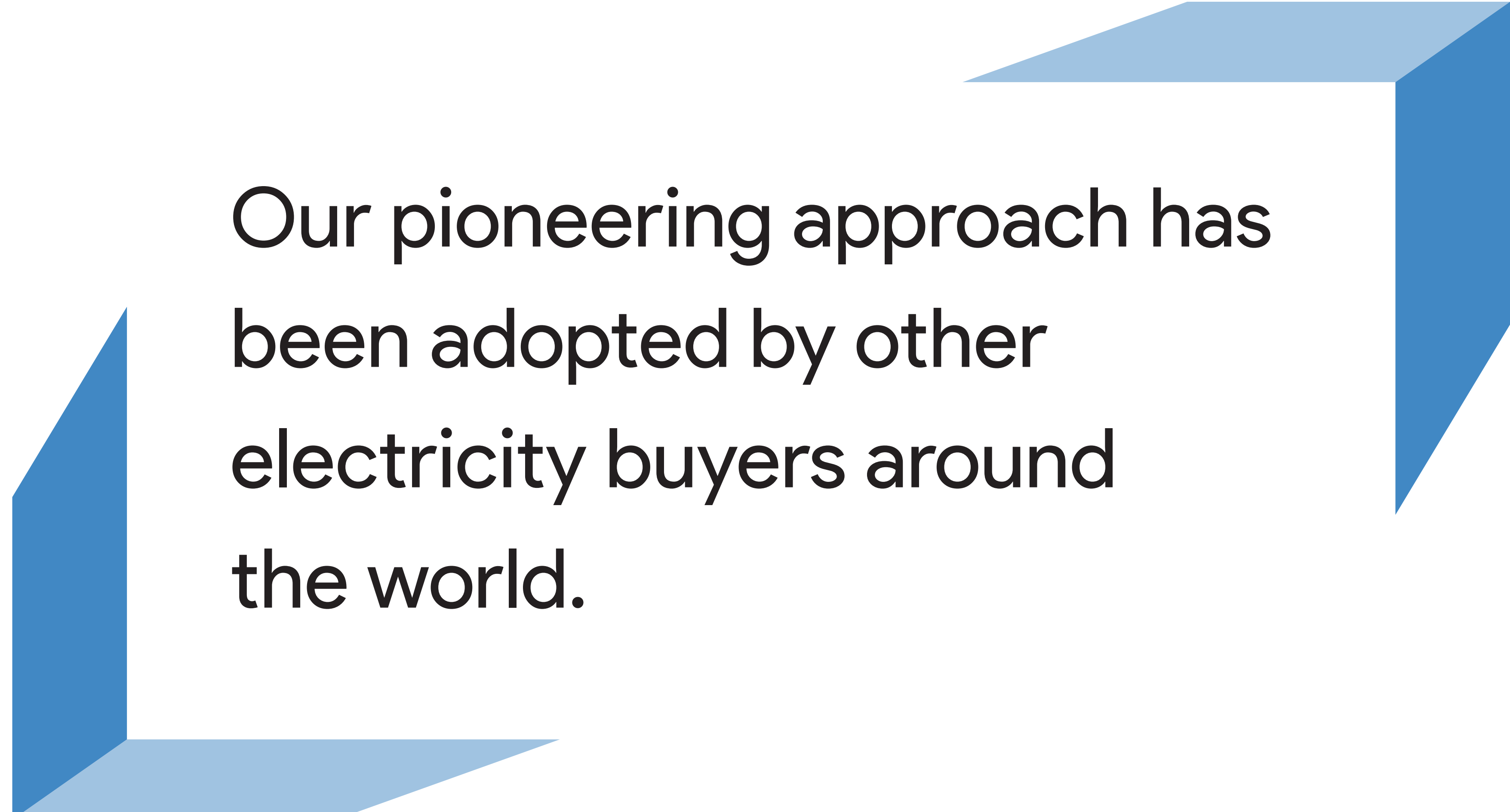




Sustainability

Google's Data Centres are the most efficient in the world. We have a bold goal to reach net-zero emissions across all of our operations and value chain by 2030, supported by a goal to run on 24/7 carbon-free energy, on every grid where we operate.

As a large energy buyer, we are committed to new clean energy technologies that can help the UK decarbonise more quickly. As part of the environmental assessments we will carry out, we will undertake a Climate Change and Greenhouse Gas assessment which considers any potential effects Thurrock Data Centre could have on the environment.



Our pioneering approach has been adopted by other electricity buyers around the world.

Next steps

Thank you for taking the time to learn about our plans. We would value hearing your suggestions and feedback to help us to refine our proposals. You can submit your written feedback by:

Completing an online questionnaire at:
thurrockdatacentre.co.uk

Submitting your comments or paper questionnaire by email to:
information@thurrockdatacentre.co.uk

Posting a questionnaire or your comments (no stamp required to):
**Thurrock Data Centre,
FREEPOST SEC Newgate UK LOCAL**

To ensure we can take these into account, please let us have your responses by 4 November 2024.

Feedback from this consultation, along with the outputs of our environmental assessments and technical work will help us to refine the outline planning application we will submit to Thurrock Council. We currently expect to do this later this year.

As part of our application, we will submit a document that summarises comments received from the local community and engagement undertaken in support of the project.

Thurrock Council will conduct its own consultation before making a decision on the application. This presents another opportunity to provide feedback on our application.

The logo graphic for Thurrock Data Centre is a white, stylized shape resembling a folded corner or a document page, positioned in the bottom right corner of the page. It consists of a vertical line on the right, a horizontal line at the bottom, and a diagonal line connecting the top-right corner to the bottom-left corner, creating a triangular void.

**Thurrock
Data
Centre**